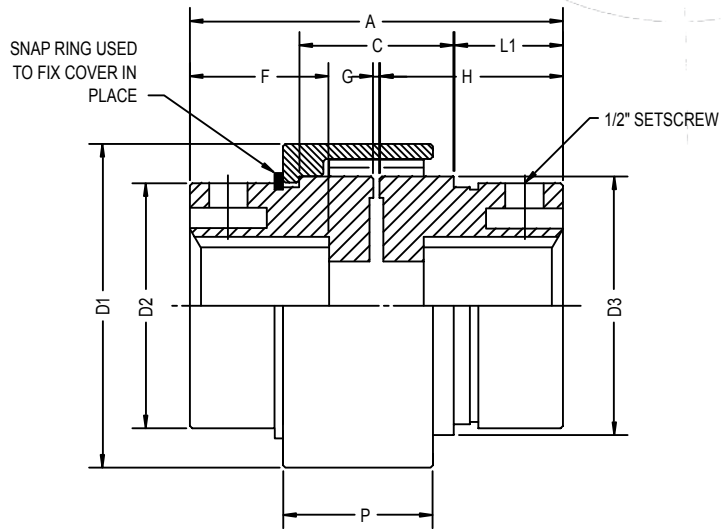
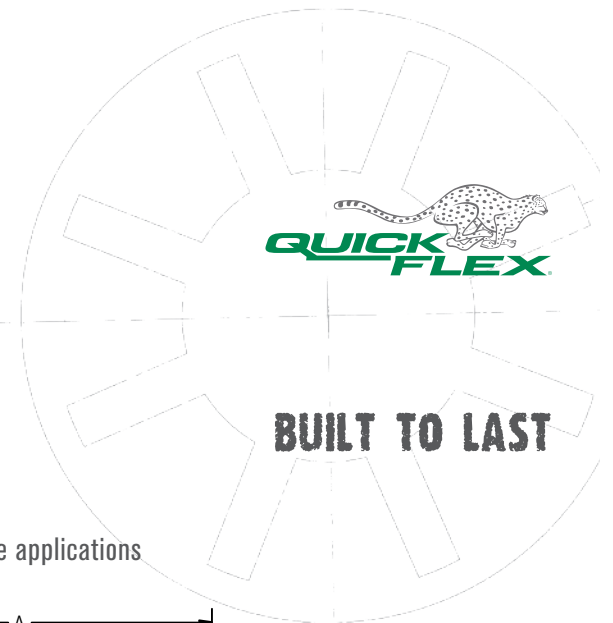


NEW!

Splined Hub Quick-Flex Couplings

- ⇒ Perfect for hydraulic applications such as pumps and motors
- ⇒ No lubrication required
- ⇒ Value priced and only spare part needed is a urethane insert
- ⇒ Quickly change insert without moving shafts or hubs
- ⇒ Available with cover options for high speed or high torque applications



Coupling Series	Spline Form		Spline O.D.	A	C	D1	D2	D3	F	G _{MIN}	G _{MAX}	H	L1	P	WT (lbs)
	# of Teeth	Diametral Pitch													
QF25SPL13T8/16	13	8/16	1.75"	4.86	2.00	4.21	3.19	3.37	1.81	0.08	0.21	2.39	1.42	1.95	10
QF25SPL14T12/24	14	12/24	1.25"	5.96	2.42	5.48	3.52	4.49	2.16	0.04	0.21	2.96	1.78	2.38	17
QF50SPL13T8/16	13	8/16	1.75"												
QF50SPL14T12/24	14	12/24	1.25"												

*Note: Other hub and spline sizes available on request. Please have the following information available at time of request:

- » Shaft O.D.
- » # of Teeth
- » Straight sided or involute (convex) sided teeth
- » Metric pitch or Diametrel pitch (if 6, 8 or 10 teeth)

